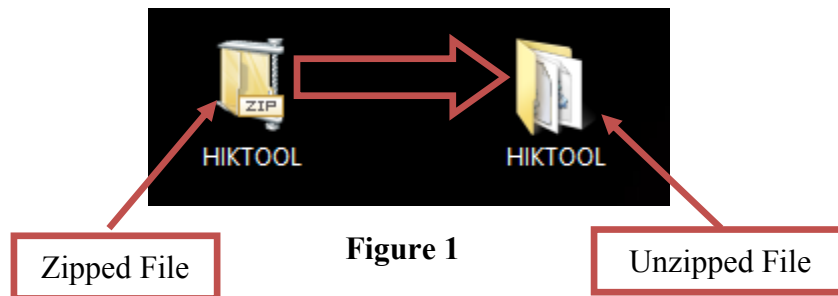


| | | | | | |
|------------------|--------------------------------------|----------|-----|-------|---|
| Title: | DVR Automatic Firmware Upgrade | | | | |
| Date: | 8/27/2014 | Version: | 1.0 | Pages | 5 |
| Product: | DS-72xxHWI-SH and DS-73xxHWI-SH DVRs | | | | |
| Action Required: | Information only | | | | |

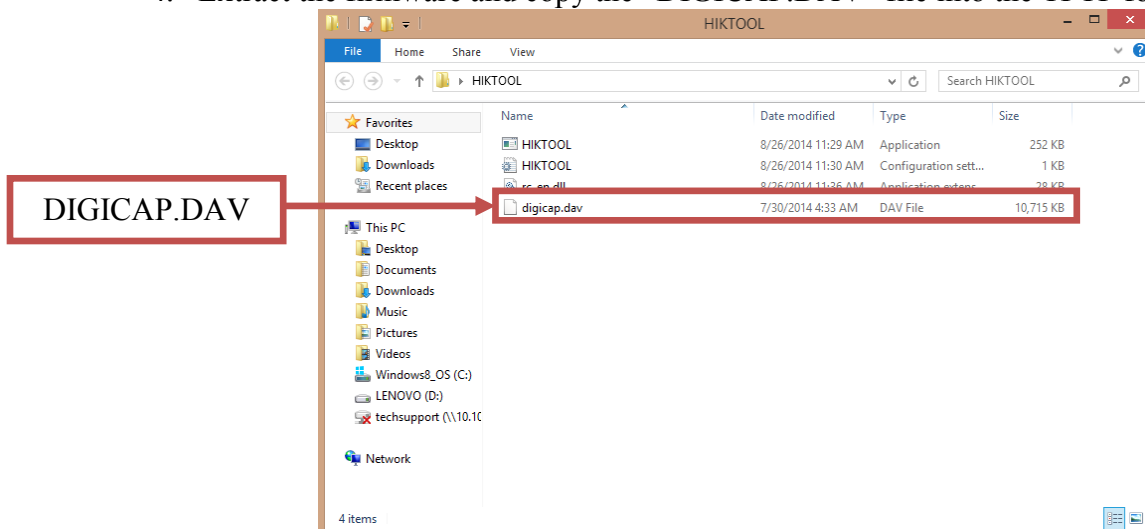
If the DS-72xxHWI-SH or DS-73xxHWI-SH DVRs stop providing local video output and are not accessible over the network, this could be due to FIRMWARE CORRUPTION.

There is a solution for this issue:

1. download the HIKTOOL software from the link below:
<https://www.dropbox.com/s/jw07or0uuakljq/HIKTOOL.zip?dl=0>
2. Download the appropriate firmware for the DVR from:
4 channel DVR: http://www.hikvision.com/en/us/download_more.asp?id=1360
8 channel DVR: http://www.hikvision.com/en/us/download_more.asp?id=1361
16 channel DVR: http://www.hikvision.com/en/us/download_more.asp?id=1362
3. Extract the TFTP Server software onto the DESKTOP (Figure 1).



4. Extract the firmware and copy the “DIGICAP.DAV” file into the TFTP folder



| | | | | | |
|------------------|--------------------------------------|----------|-----|-------|---|
| Title: | DVR Automatic Firmware Upgrade | | | | |
| Date: | 8/27/2014 | Version: | 1.0 | Pages | 5 |
| Product: | DS-72xxHWI-SH and DS-73xxHWI-SH DVRs | | | | |
| Action Required: | Information only | | | | |

5. Manually change the IP address of the computer to **192.0.0.128** (Figure 3).

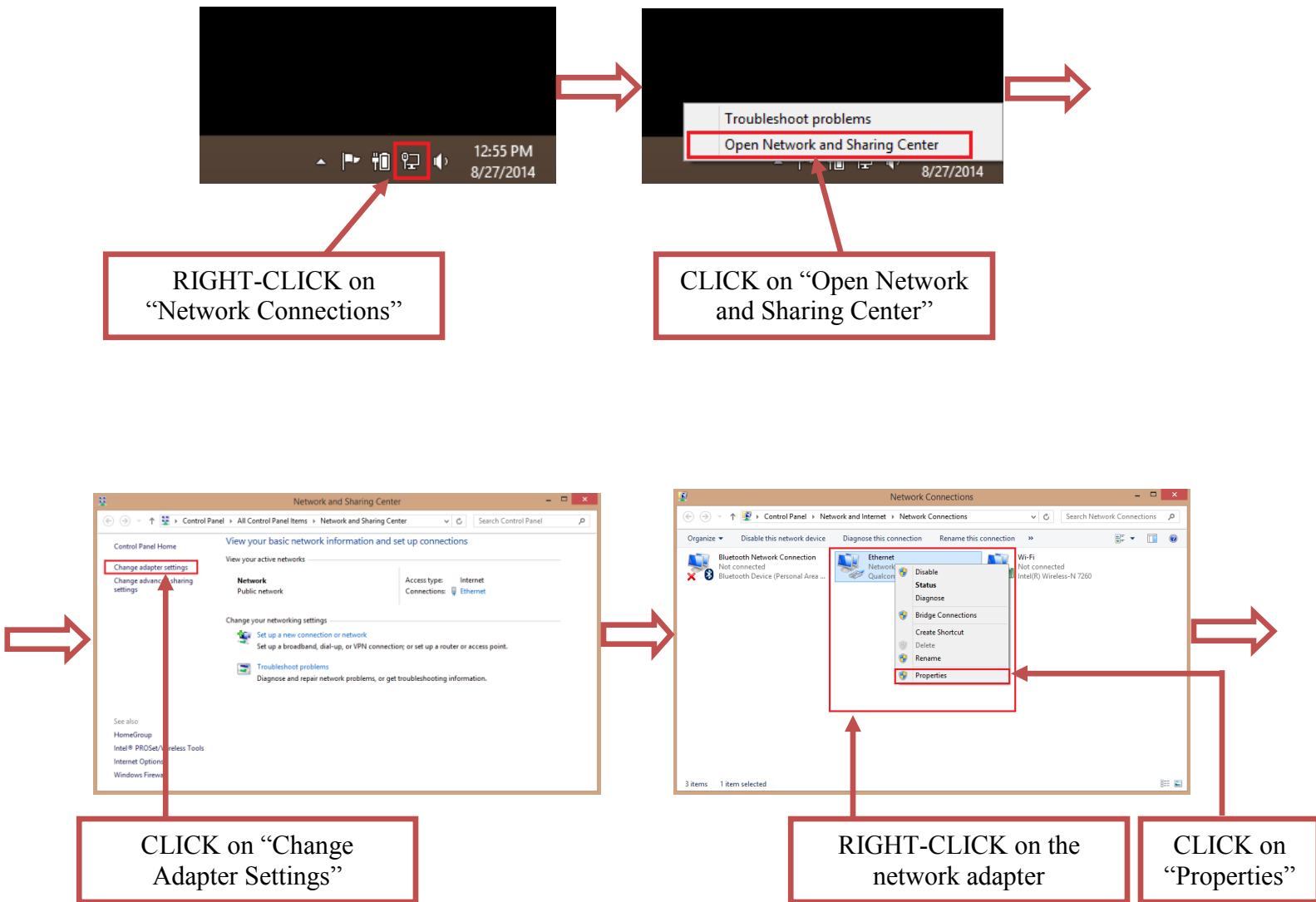


Figure 3 (Continues on the next page)

| | | | | | |
|------------------|--------------------------------------|----------|-----|-------|---|
| Title: | DVR Automatic Firmware Upgrade | | | | |
| Date: | 8/27/2014 | Version: | 1.0 | Pages | 5 |
| Product: | DS-72xxHWI-SH and DS-73xxHWI-SH DVRs | | | | |
| Action Required: | Information only | | | | |

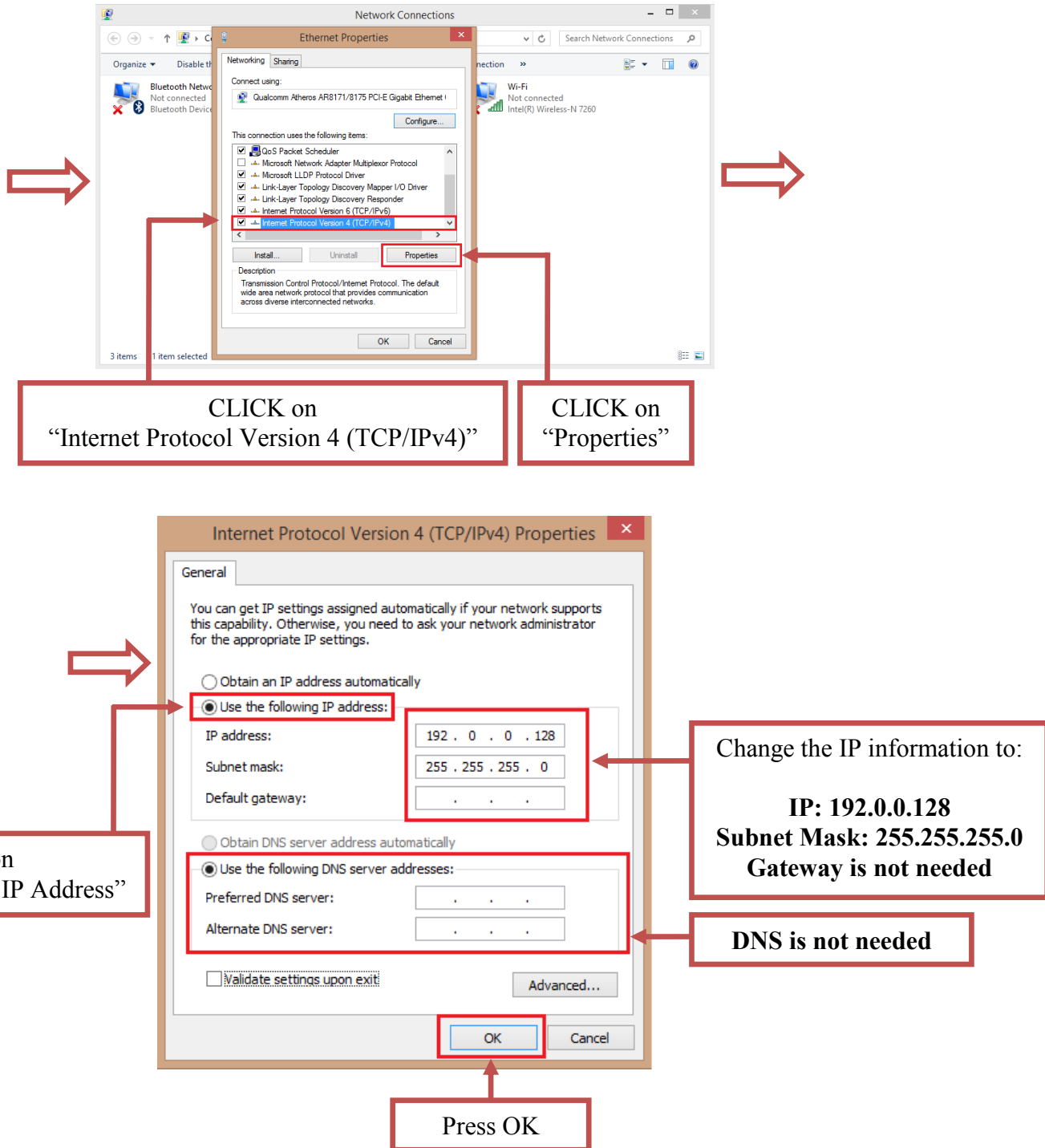
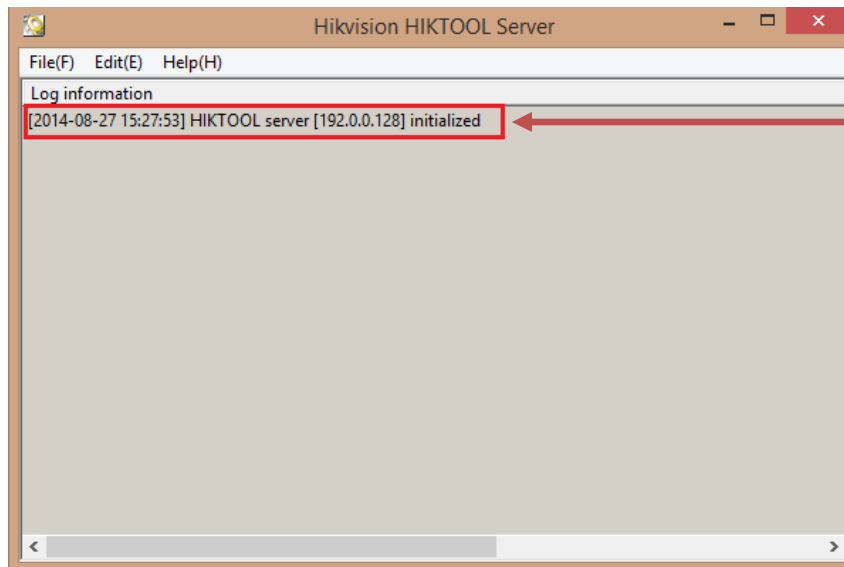


Figure 3

| | | | | | |
|------------------|--------------------------------------|----------|-----|-------|---|
| Title: | DVR Automatic Firmware Upgrade | | | | |
| Date: | 8/27/2014 | Version: | 1.0 | Pages | 5 |
| Product: | DS-72xxHWI-SH and DS-73xxHWI-SH DVRs | | | | |
| Action Required: | Information only | | | | |

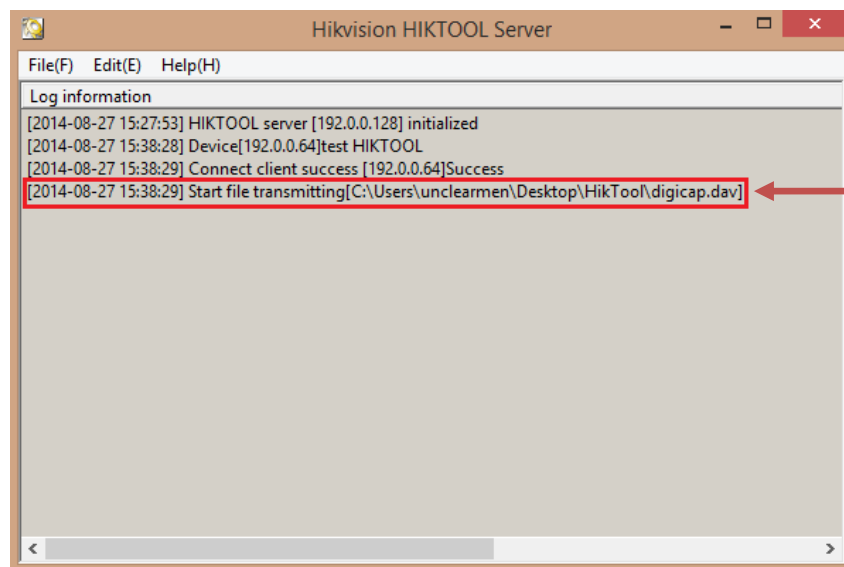
After the computer's IP address has been changed to **192.0.0.128**, connect the computer to the DVR's network port using a regular network cable (no need to use a crossover cable). Power down the DVR, wait several minutes and turn the DVR back on. Wait **3 seconds** exactly, and launch the HIKTOOL software. The following window will come up (Figure 4).



Please note:
The software states the 192.0.0.128 IP address

Figure 4

After a few split seconds the file transmission will begin (Figure 5).



File transmission starts

Figure 5

| | | | | | |
|------------------|--------------------------------------|----------|-----|-------|---|
| Title: | DVR Automatic Firmware Upgrade | | | | |
| Date: | 8/27/2014 | Version: | 1.0 | Pages | 5 |
| Product: | DS-72xxHWI-SH and DS-73xxHWI-SH DVRs | | | | |
| Action Required: | Information only | | | | |

Several seconds later the file transmission will be completed (Figure 6).

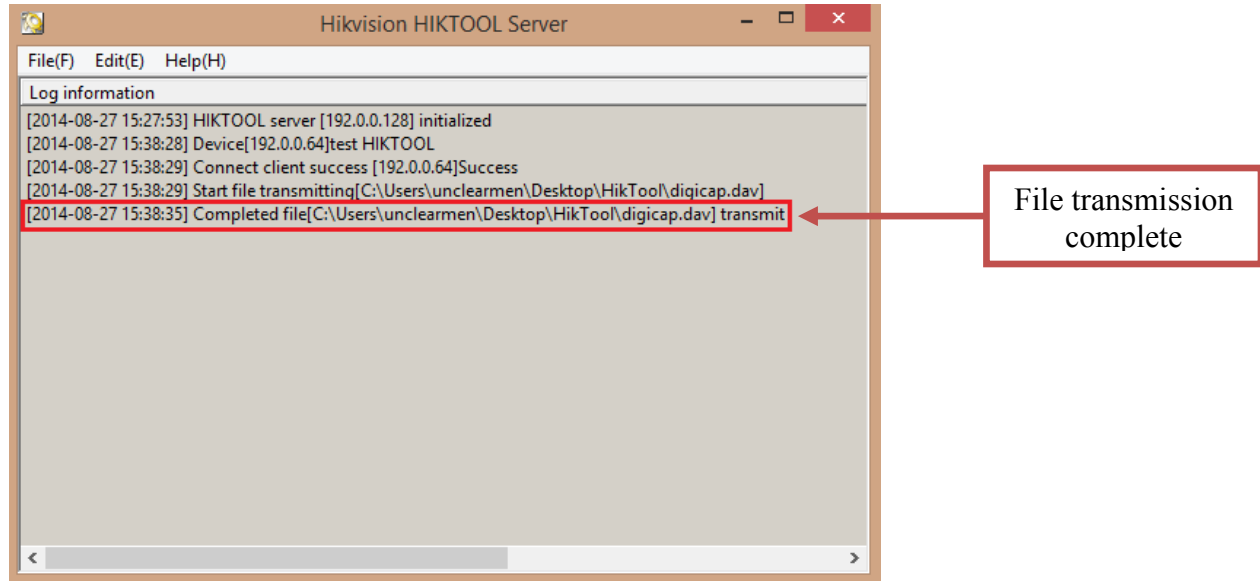


Figure 6

After the file transmission is complete, the DVR will need up to 3 minutes to install the firmware. As soon as the firmware is installed, the DVR will turn on, display the cameras and will be accessible on the network.