

Brighten Every Moment

# Ultra Series

Indoor



True-to-Life Display



Flip-Chip COB



Energy-Saving

## Superior Cabinet

- **Super Slim – 29.3mm**

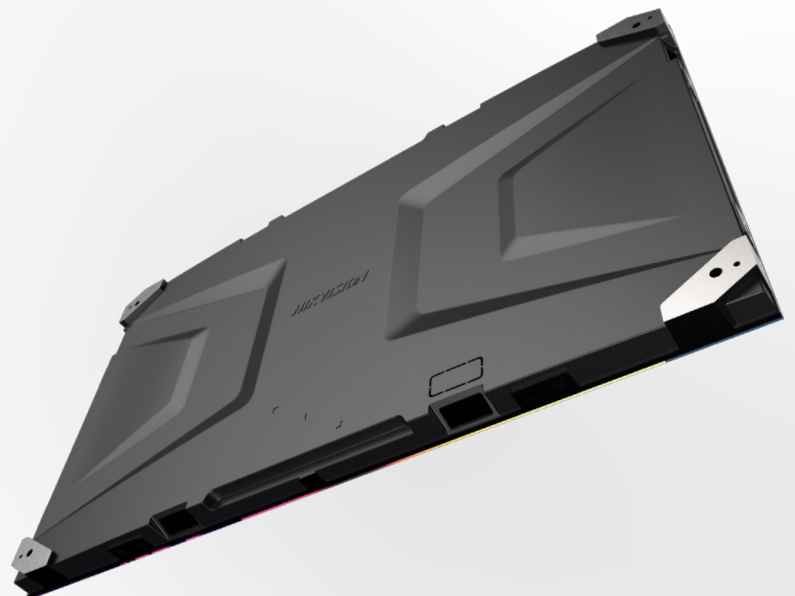
Combining elegance and robustness

- **Ultra Light – 17 kg/m<sup>2</sup>**

Facilitating effortless installation

- **Exceptionally Robust**

Tensile strength of up to 2,000N  
Splicing of 50 rows / 17 m, no deformation



## Convenient Splicing & Installation

- **Big Board – 600\*337.5 mm, 16:9**

More accurate and easier splicing, compatible with diverse resolutions

- **Flexible Wiring**

Cascading both horizontally and vertically, saving wiring costs

- **Removable Back Frame Plate**

With cables passing through, preventing tangled cords at the screen bottom

## Unique Advantages



### True-to-Life Display Performance

- High contrast ratio, extreme black, low glare, and expansive color gamut
- High color consistency and image denoising effect



### Stable and Energy-Saving Flip-Chip COB

- Higher luminous efficiency and lower power consumption
- Superior stability, significantly mitigating oxidation and pixel failure



### Single-Cabinet Calibration

- Easy installation of cabinets in any desired position
- No additional calibration required when replacing spare lamp boards
- Facilitating flexible warehousing and maintenance

## Application Scenarios



Command Center



Meeting Room



Studio



Auditorium & Lecture Hall

## Key Spec

	DS-D4009BW-2FC	DS-D4012BW-2FC	DS-D4015BW-2FC
Pixel Structure	Flip-chip COB		
Pixel Pitch (mm)	0.9375	1.25	1.5625
Cabinet Dimension (W × H × D, mm)	600 × 337.5 × 29.3 (23.622" × 13.287" × 1.154")		
Cabinet Resolution (W × H)	640 × 360	480 × 270	384 × 216
Cabinet Weight	3.4 Kg(7.496 lb)		
Cabinet Material	Aluminium die casting		
Protection Level	IP65 (Module)		
Brightness (nits)	600		
Viewing Angle	160°(H)/160°(V)		
Contrast Ratio	15000:1		
Peak Consumption (W/m <sup>2</sup> )	≤ 360	≤ 300	≤ 300
Refresh Rate (Hz)	3840		
Grey Level (bit)	16		

