



Unboxing and Tutorial of General IP Security System

Title:	Unboxing and Tutorial of General IP Security System	Version:	v1.0	Date:	11/04/2020
Product:	NVR, Camera			Page:	1 of 17

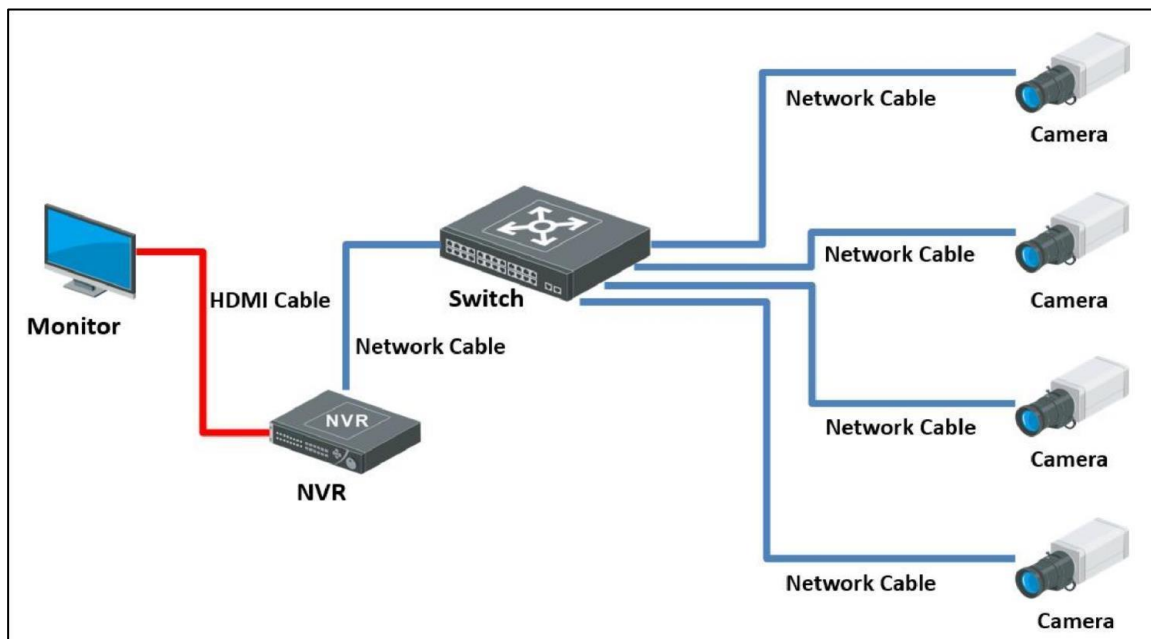
Preparation

1. NVR, IP camera
2. Memory card, waterproof tape, HDD, HDMI cable, Network cables, Monitor, Switch

Unboxing and Tutorial of General IP Security System

1. Topology

When build a general IP system, you will need NVR, PoE Switch and PoE cameras, cameras are powered by PoE. If you got non-PoE cameras, cameras should powered by power adaptor.



Title:	Unboxing and Tutorial of General IP Security System	Version:	v1.0	Date:	11/04/2020
Product:	NVR, Camera			Page:	2 of 17

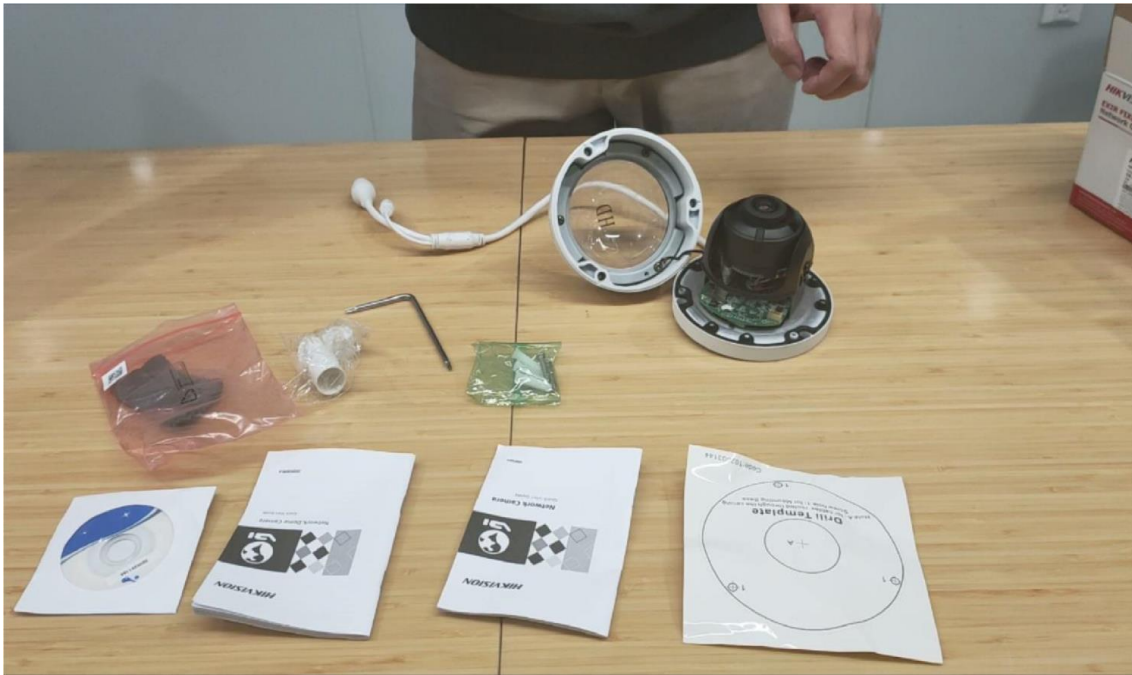
2. Unboxing

Take out the NVR, accessories and cameras from the box, prepare the memory card, waterproof tape, HDD, network cables, HDMI cable, monitor and PoE Switch.



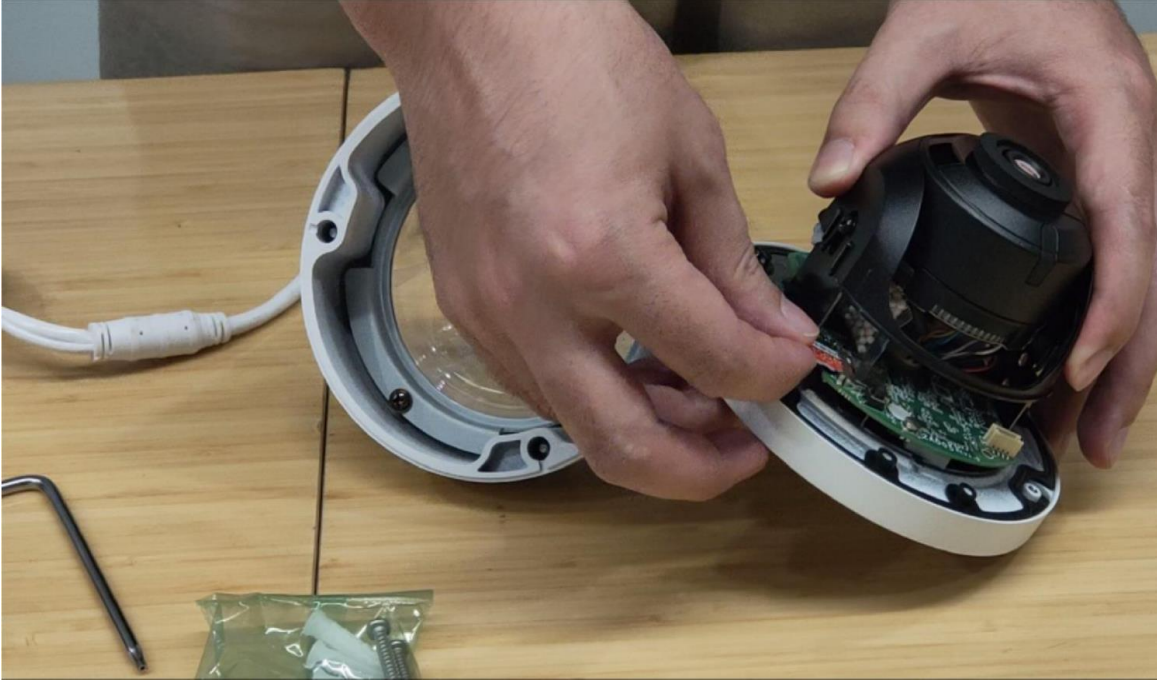
3. Installation camera

a) Loosen screws and remove the bubble of camera.



Title:	Unboxing and Tutorial of General IP Security System	Version:	v1.0	Date:	11/04/2020
Product:	NVR, Camera			Page:	3 of 17

b) Install memory card



c) Paste the Drill Template to the wall or ceil and follow the prompt to drill screw hole.



Title:	Unboxing and Tutorial of General IP Security System	Version:	v1.0	Date:	11/04/2020
Product:	NVR, Camera			Page:	4 of 17

d) Drive in the expansion screw to the screw hole



e) Fix the camera to the wall or ceil with screws



Title:	Unboxing and Tutorial of General IP Security System	Version:	v1.0	Date:	11/04/2020
Product:	NVR, Camera			Page:	5 of 17

f) Adjust the lens angel.

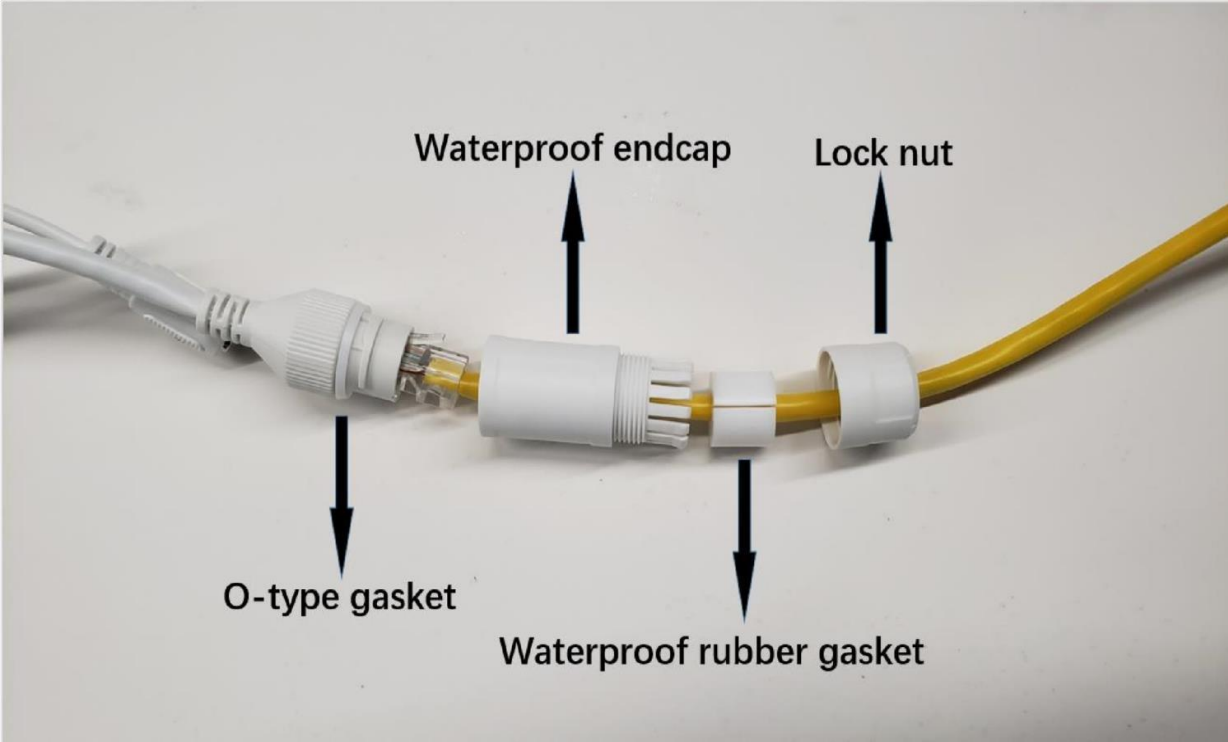


g) Close up the bubble



Title:	Unboxing and Tutorial of General IP System	Version:	v1.0	Date:	11/04/2020
Product:	NVR, Camera			Page:	6 of 17

h) Install the waterproof jacket



Title:	Unboxing and Tutorial of General IP System	Version:	v1.0	Date:	11/04/2020
Product:	NVR, Camera			Page:	7 of 17

i) Wrap waterproof tape around the power cable



Title:	Unboxing and Tutorial of General IP System	Version:	v1.0	Date:	11/04/2020
Product:	NVR, Camera			Page:	8 of 17

Note: Waterproof protection is a must.

j) Remove protective film



4. Install HDD into NVR

a) Loosen screws and remove cover of NVR



Title:	Unboxing and Tutorial of General IP System	Version:	v1.0	Date:	11/04/2020
Product:	NVR, Camera			Page:	9 of 17

b) Connect cables to HDD



c) Fix HDD to NVR bottom



Title:	Unboxing and Tutorial of General IP System	Version:	v1.0	Date:	11/04/2020
Product:	NVR, Camera			Page:	10 of 17

d) Connect cables to NVR



e) Install the cover back **Note: The HDD model should be in the HDD Compatible List**



Title:	Unboxing and Tutorial of General IP System	Version:	v1.0	Date:	11/04/2020
Product:	NVR, Camera			Page:	11 of 17

5. Connection

- a) Connect the cameras to the PoE ports of switch with network cables
- b) Connect the NVR to switch with network cable
- c) Connect the NVR to a monitor with the HDMI cable.
- d) Connect the power adaptor and the mouse.

Note: The network cables between Switch and camera should within 100 meters!



6. Configuration

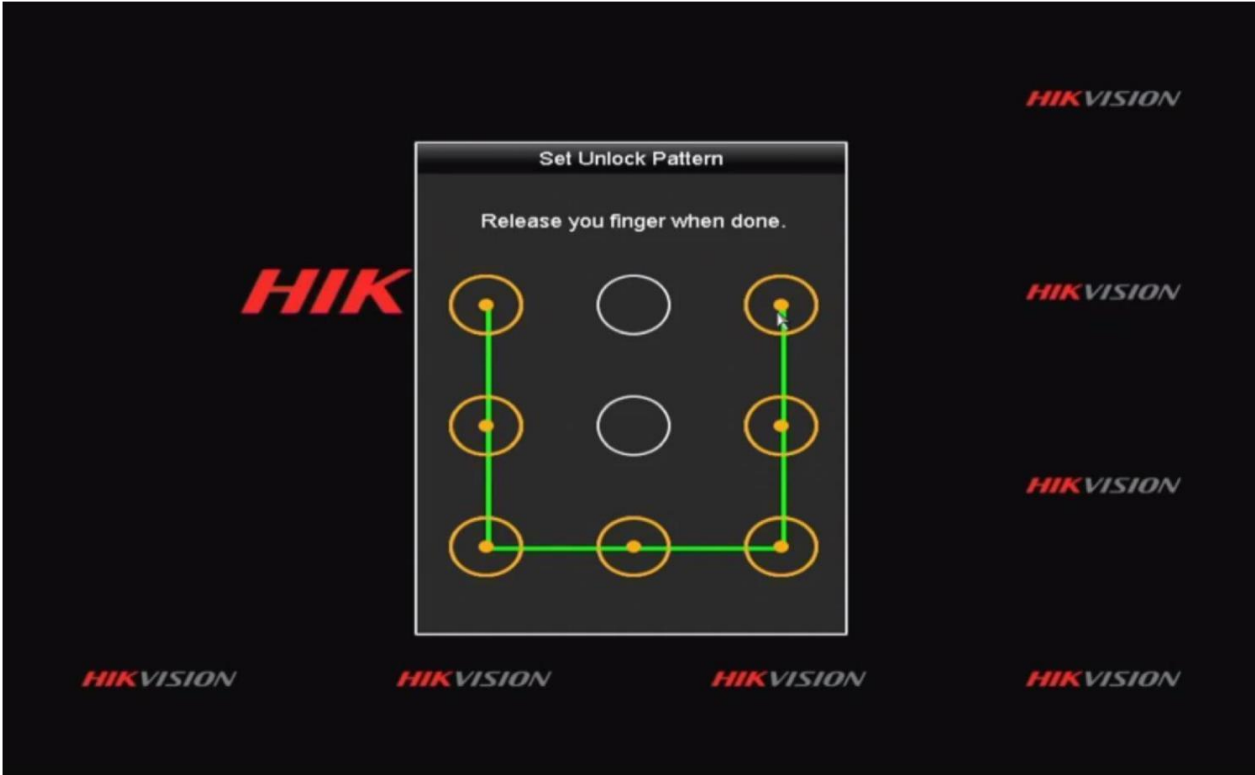
- a) Power up the NVR and the monitor. Input the admin password twice and the IP camera activation password.

Note: The camera should in Inactive status or share the same password with NVR.

Title:	Unboxing and Tutorial of General IP System	Version:	v1.0	Date:	11/04/2020
Product:	NVR, Camera			Page:	12 of 17

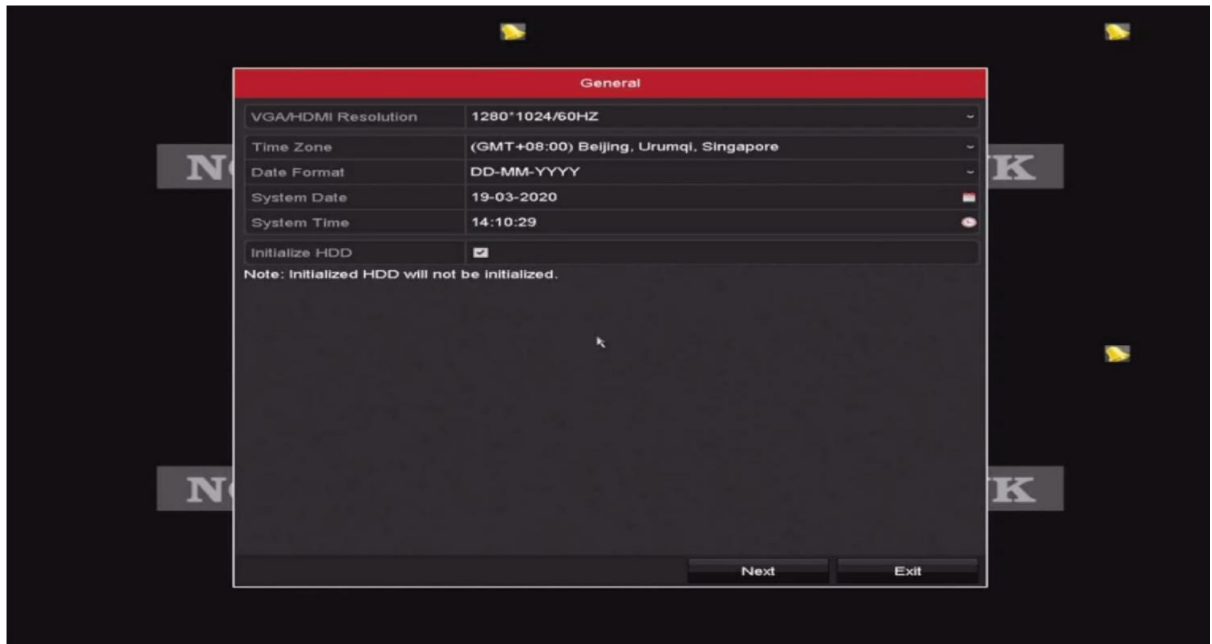


b) Set the unlock pattern, select the system language.

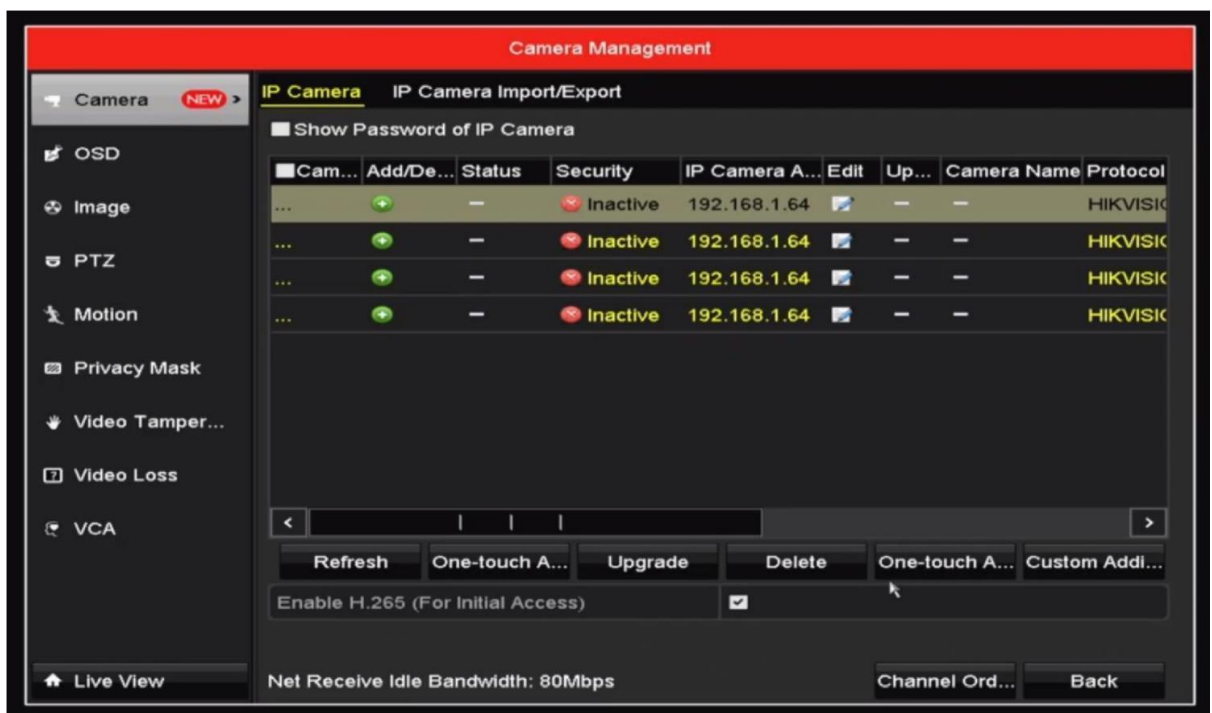


Title:	Unboxing and Tutorial of General IP System	Version:	v1.0	Date:	11/04/2020
Product:	NVR, Camera			Page:	13 of 17

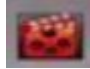
c) Set time and check the checkbox of Initialize HDD, click Next, then exit the Wizard



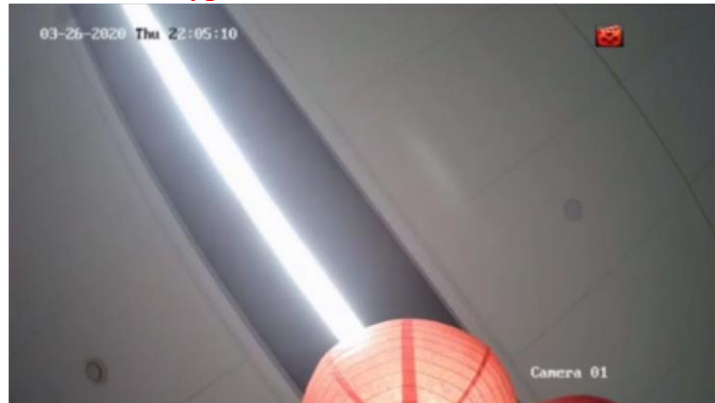
d) Right click, go to [Camera], click [One-touch adding] to add cameras to NVR



Title:	Unboxing and Tutorial of General IP System	Version:	v1.0	Date:	11/04/2020
Product:	NVR, Camera			Page:	14 of 17

- e) Live view of the network cameras will start to show on the monitor after about 30 seconds and all cameras will be recorded to the HDD. The  in the live view image means this channel is recording video.

Note: The default Record Schedule type is Continuous and Record Schedule time is 7*24.



7. Check List

No.	Details	Yes/No?
1	Are the camera network cable and power cord waterproof?	
2	Are all cameras online?	
3	Are all cameras live view normal?	
4	Is the status of HDD normal?	
5	Are all camera videos playback normal?	

8. FAQ

- a) What can I do when NVR live view interface shows NO LINK?
- Check the online status of camera on Camera Management interface, insure the camera is online;

Title:	Unboxing and Tutorial of General IP System	Version:	v1.0	Date:	11/04/2020
Product:	NVR, Camera			Page:	15 of 17

- Check the Live View setting on Configuration—Live View—View interface, insure the channel live view setting is normal.
- b) What can I do when camera shows offline on NVR?
- Check the Status of camera on Camera Management interface, if it shows *The user name or the password is wrong*, change the channel password to camera password;
 - If it shows *IP camera does not exist*, check the PoE port status indicator light on PoE switch, insure the camera power supply is normal;
 - If the power supply is abnormal, try to re-plug the network cable in PoE port or change the network cable
 - If the power supply is normal, try to delete and re-add the camera on Camera Management interface of NVR
- c) What can I do when live view interface shows unsupported stream type?
- Change the encode type of camera sub stream from MJPEG to H.265 or H.264.
- d) What can I do when play back interface shows no video file?
- Check the status of HDD on HDD interface, if it shows uninitialized, initialize the HDD;
 - Check the record schedule on Record—Schedule interface, if the record schedule is empty, set the record schedule.



See Far, Go Further